

# Atlas

New Vehicle  
Inspection

**FOR OEMS**



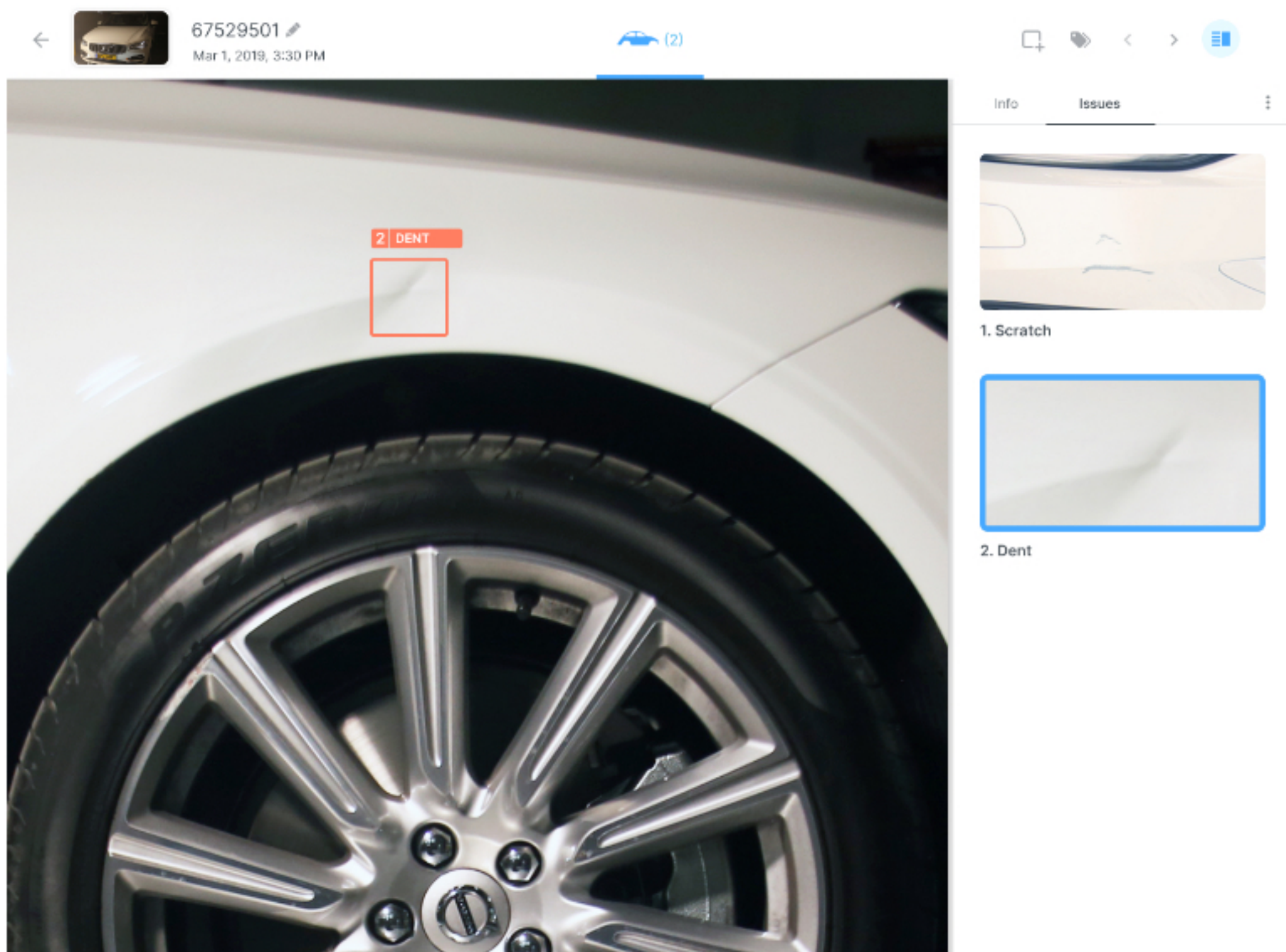
**UVEYE**

VEHICLE INSPECTION SYSTEMS



# Atlas Automatic New Cars Quality Assurance

- ✓ Drive-through solution ensures a streamlined process
- ✓ High-resolution documentation
- ✓ Online reporting
- ✓ Immediate analysis: in-line/paint shop/end of line/  
logistics and distribution:
  - ✓ Dirt, scratches, dents and dings
  - ✓ Paint chips and dust exposure
  - ✓ Component InspectionAnd more...
- ✓ One stop shop platform – exterior, undercarriage and  
tire inspection at the end-of-line, and before delivery



## *Other Inspection Methods*

- ✗ Require highly trained personnel
- ✗ Low-quality assessment leads to lower manufacturing volume
- ✗ Long estimation times = long delays
- ✗ When data isn't saved, errors aren't fixed
- ✗ Manual inspection is often subjective and inaccurate



Vehicle Details



Vehicle ID 70-456-73  
VIN -  
Scan time 8/24/2019 5:52 PM  
Make Skoda  
Model Octavia  
Color Gray  
Year 2011-2012

Exterior Analysis 2 Issues

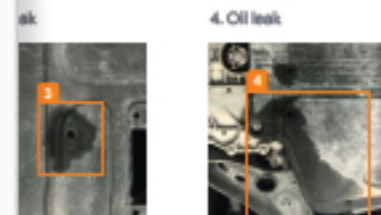
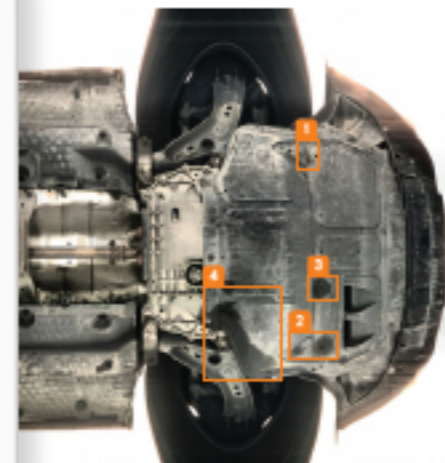
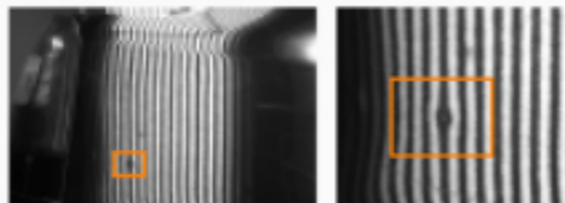


Issues (2)

1. Scratch



2. Dent



4. Oil leak



Goodyear  
195/65R15  
2517 (3.8y)  
✓ No Issues



Goodyear  
195/65R15  
2516 (2.8y)  
✓ No Issues

# Sample Vehicle Report

# The UV<sub>3</sub>EYE<sub>3</sub> Way

- ✓ Fully automatic inspection process
- ✓ Get a quality report without human involvement
- ✓ High-resolution imaging and detection - 0.1mm accuracy
- ✓ Cloud-based : Online reporting can be shared across
- ✓ Get meaningful insights with advanced BI tools
- ✓ Provide complete transparency



Integrates with

UVEYE Cloud



Atlas



Helios



Artemis

Scans

Filter LP/VIN

LP/VIN	Scanned at	Make	Model	Year	Color	Body Type	Site
SLX3267J	12:02:45	Peugeot	N/A	N/A			
7321145	02-29-2019 12:00:03	N/A	N/A				
N/A	02-29-2019 12:00:03	N/A	N/A				
1234567	02-29-2019 12:00:03	Honda	Jazz				
1234567	02-29-2019 12:00:03	Honda	Jazz				
1234567	02-29-2019 12:00:03	N/A	N/A				
1234567	02-29-2019 12:00:03	Honda	N/A				
1234567	02-29-2019 12:00:03	Honda	N/A	2012		Suv-terroSsover	Test-Site-1

Filters

Reset All

Dec 1, 2019 - Feb 1, 2020

Normal vs. Faulty scans

Normal scans: 3,068  
Faulty scans: 290 (9.1%)  
Total faults: 721  
Avg. faults/vehicle: 2.2

Issues by model

Model	Percentage
Model 1	38%
Model 2	28%
Model 3	14%
Model 4	13%
Model 5	12%

Issue types

Issue Type	Percentage
Dent	38%
Scratch	20%
Paint damage	14%
Dirt	13%
Other	12%

Showing 1-12 results out of 320

Page 1 of 25

## One Platform for All Systems



Connect Anytime,  
Anywhere



Monitor volume and  
performance over time



Get business  
Insights in real-time



Share data with colleagues  
and customers