



Helios

Undercarriage Analysis

UVEYE

VEHICLE INSPECTION SYSTEMS



Helios

Undercarriage Analysis

UVEYE

VEHICLE INSPECTION SYSTEMS

Helios



Helios
MOBILE



Helios

DETECT MECHANICAL FAULTS IN SECONDS

- ✓ Works anywhere, rain or shine
- ✓ Complete analysis at your fingertips
- ✓ Drive & Go - Vehicle doesn't need to stop
- ✓ Full 3D model included
- ✓ Supports any type of vehicle



Inferior vehicle examination methods

Manual inspection methods are obsolete.

- ✗ Bulky process, unreliable results
- ✗ Long inspections = less work done
- ✗ Require a lot of space
- ✗ Limited angle view
- ✗ Require skilled technicians to interpret readings
- ✗ Reports get lost



The UVeye Way

Automatic Inspection Means No Mistakes

- ✓ Reliable & trustworthy
- ✓ Full analysis in seconds
- ✓ Fast & smooth inspection process
- ✓ Full 180° visibility
- ✓ Easy operation by anyone
- ✓ Full access to all vehicle history & reports





Helios Automatic detection of

✓ Oil and water leakages

✓ Broken connectors

✓ Spring problems

✓ Exhaust pipe faults

✓ Rust on the chassis

✓ Catalytic convertor faults

✓ Wear and tear

✓ Missing or broken parts



Proper Inspection means Satisfied Customers

- ✓ Complete support for multilane architecture
- ✓ Bi-directional scanning
- ✓ High speed intelligent image processing - within seconds the operator receives a fully-scanned image of the vehicle's undercarriage
- ✓ Supports any vehicle type with no limitation on vehicle length
- ✓ Stop & Go Image Acquiring - stopping above the system and continuing driving does not affect image quality
- ✓ Reporting system with export options
- ✓ Operational even in harsh weather conditions

Stationary Unit Technical Specs

Scanning unit Dimensions (L x W x H)	174 cm X 50 cm X 32 cm 70" X 19" X 13"
Power supply	110 / 220 VAC
Illumination type	Dynamic LED Array
Operating tempratures	-20 ° C (-4 ° F) to 60 ° C (-140 ° F)
Ingress Protection	IP68
Storage	2 - 100 TB

Mobile Unit

Technical Specs

Scanning unit Dimensions (L x W x H)	84.8 cm X 34.5 cm X 7 cm 33.3" X 13.5" X 2.75"
---	---

Material	Industrial Hard Polycarbonate Plastic
----------	--

Illumination type	Dynamic LED Array
-------------------	-------------------

Weight	15 kg
--------	-------

ENVIRONMENTAL

Operating tempratures	-20° C (-4°F) to 60° C (-140° F)
-----------------------	----------------------------------

Ingress Protection	IP55
--------------------	------



Integrates with
UVEYE Cloud



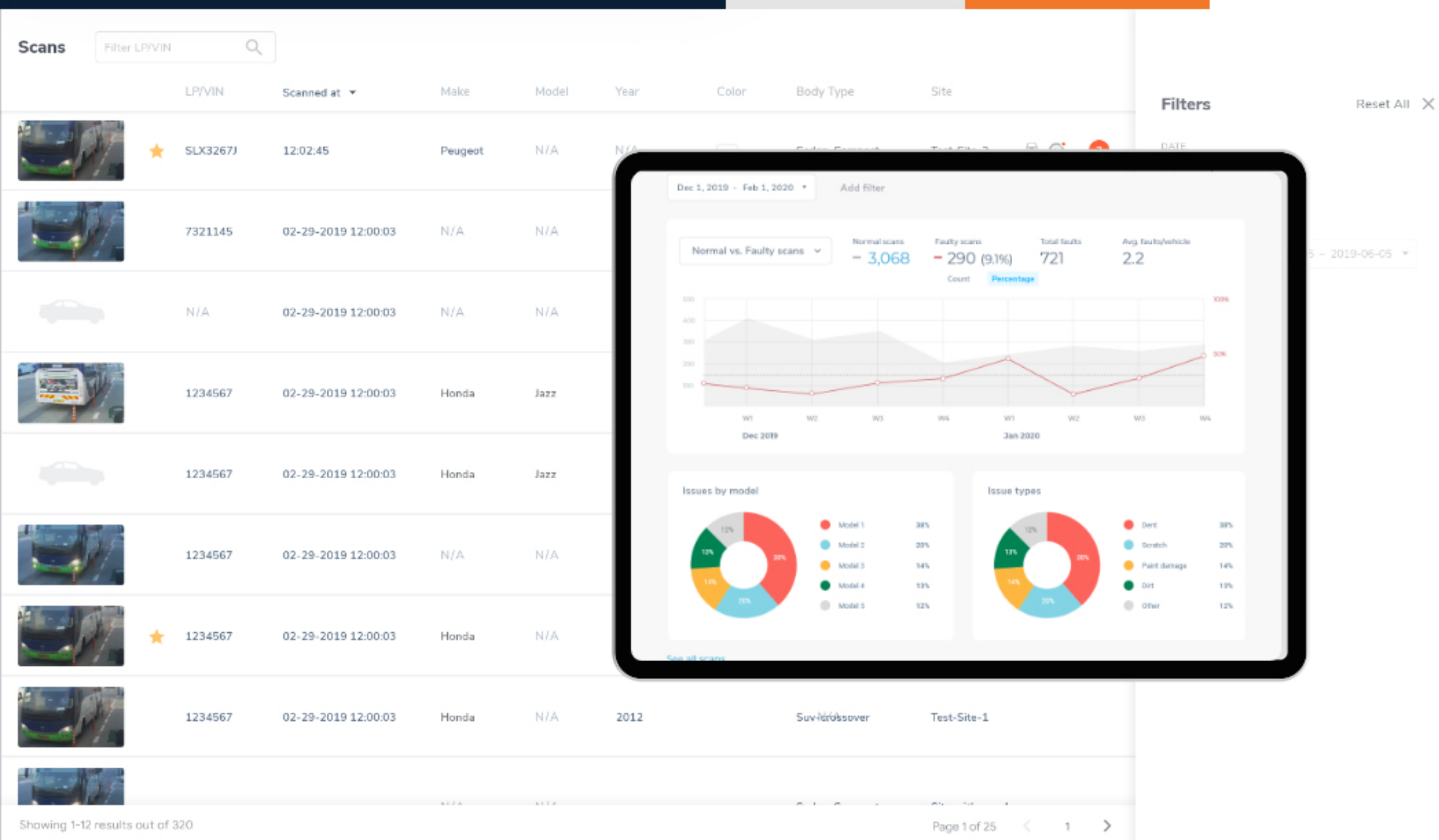
Atlas



Helios



Artemis



One Platform for All Systems



Connect Anytime,
Anywhere



Monitor volume and
performance over time



Get business
Insights in real-
time



Share data with colleagues
and customers