



VEHICLE INSPECTION SYSTEMS

UVEye is an advanced security system for detecting potential threats hidden in the vehicle's undercarriage. Its sophisticated software provides a simple and easy-to-use interface.

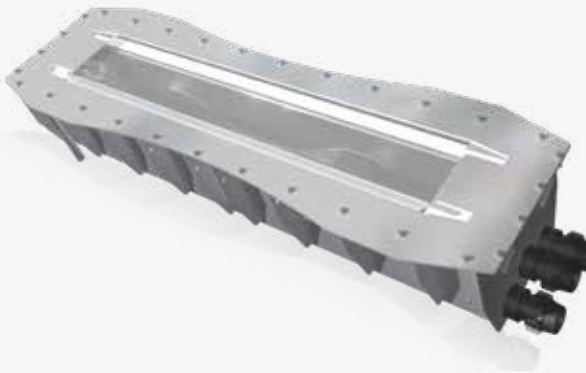
Stationary

The stationary unit uses high-resolution cameras that produce a 3D color image of any vehicle, while driving, in seconds.

It occupies a quality lighting module to allow for a comprehensive and clear mapping of the undercarriage, day or night.

Thanks to high-quality colorful scanning, threats and changes are more visibly noticeable.

UVEye is designed to integrate with external access control systems such as bollards, road blockers, arm barriers etc. as well as integrate and share information with other UVEye units installed on site.



Feature Highlights

- Complete support for multilane architecture
- Bi-directional scanning
- High-Speed Intelligent Image Processing - within seconds the operator receives a fully-scanned image of the vehicle's undercarriage
- Supports any vehicle type with no limitation on vehicle length
- Stop & Go Image Acquiring - stopping above the system and continuing driving does not affect the image quality
- Reporting system with export options
- Operational even in harsh weather conditions

Optional Features

- A.I.T.D® - UVEye's AI-based Automatic Threat Detection
- Additional Overview camera
- API for system events
- Advanced LPR camera - delivers 2 images (LP number + vehicle body overview in color)
- Automatic cleaning system

TECHNICAL SPECIFICATIONS

| | |
|--------------------------------------|---|
| Scanning unit Dimensions (L x W x H) | 174 cm X 50 cm X 32 cm 70" X 19" X 13" |
| Power supply | 110 / 220 VAC |
| Illumination type | Dynamic LED Array |
| Operating temperatures | -20 ° C (-4°F) to 60 ° C (-140° F) |
| Ingress Protection | IP68 |
| Storage | 2- 100 TB |

